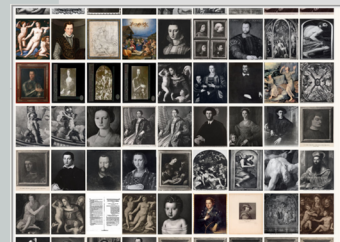


Let's Go Europeana!



Javascript libraries such as JQuery, Leaflet, Exhibit, D3, and others are employed to create a dynamic interactive environment. They form the basis for new ways by which a user can query the Europeana repository and through which the results can be re-imagined.

JScroll



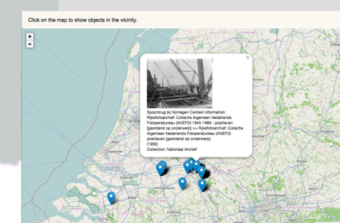
D3



JQuery



Leaflet



Let's Go Europeana! uses a wide range of technologies to achieve its ends. Hosted on a standard LAMP architecture, the site is programmed in large part using PHP. Calls are made on Europeana's API using RESTful queries to generate result sets in JSON format. This JSON data is parsed and reformulated into a format appropriate to the page being viewed and the Javascript being used. Some cleansing of the data is performed to make it suitable for processing.

SPARQL

```

PREFIX ontology: <http://www.europeana.org/ontology/>
PREFIX rdf: <http://www.w3.org/1999/02/22-rdf-syntax-ns#>
PREFIX foaf: <http://xmlns.com/foaf/0.1/>
PREFIX rdfs: <http://www.w3.org/2000/01/rdf-schema#>
PREFIX xsd: <http://www.w3.org/2001/XMLSchema#>

SELECT DISTINCT ?name ?wikipedia ?description ?comment WHERE {
  ?person rdf:type ontology:Person.
  ?person foaf:name ?name.
  ?person foaf:homepage ?url.
  OPTIONAL { ?person foaf:picture ?picture. }
  OPTIONAL { ?person foaf:comment ?comment. }
  ?person rdfs:comment ?comment.
  FILTER ( ! isBlank(?comment) )
}
ORDER BY ?name DESC, ?records_returned.
    
```

Leaflet

Exhibit