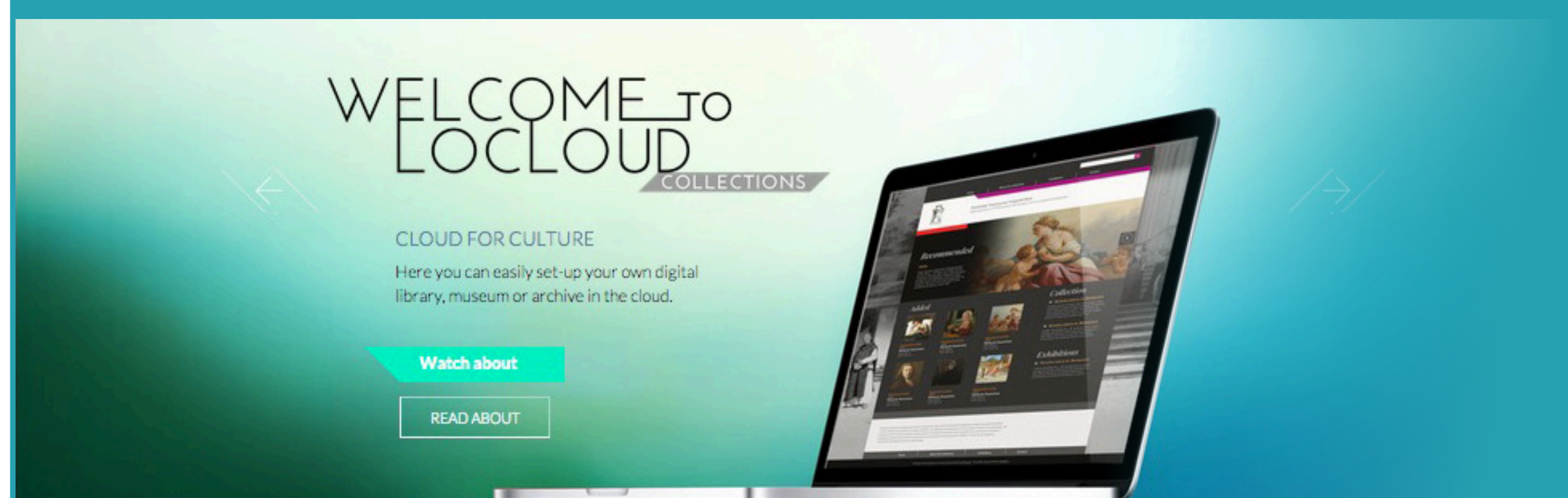


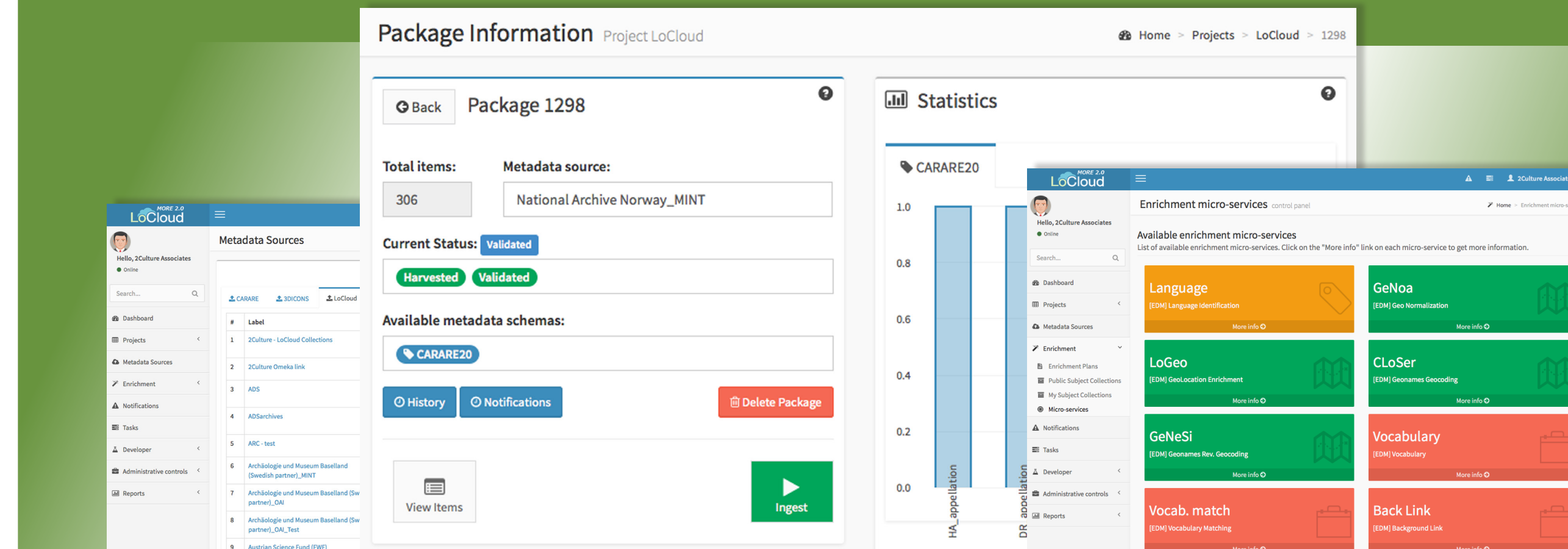
# LoCloud: Beyond the Space

## LoCloud Collections



- Lightweight, out-of-the box repository
- Provided as a service
- Dedicated to small memory institutions
- Simple, easy to start
- Supports multiple collections
- Supports many data formats
- Customizable interface
- Online support
- Multilingual
- Compatible with Europeana
- Highly available

## MORe



The services for harvest, Ingest, Validate, Transform, Enrich and Publish takes part in MORe, which has the following features:

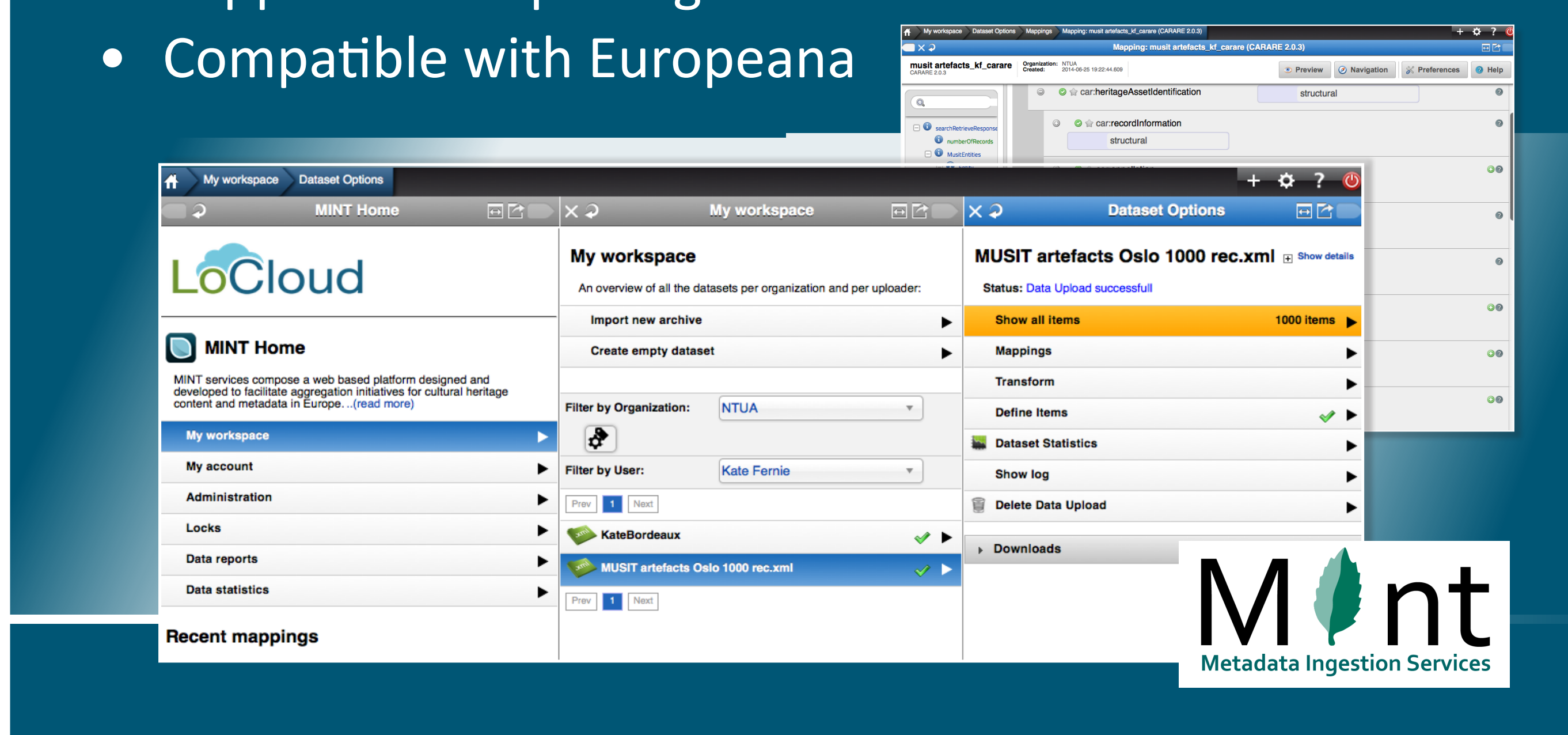
- Enrichment micro-services
- Multiple input sources
- Curation oriented
- REST API support
- Many formats
- Easy to use
- Flexible
- Scalable



## OAI-PMH

## MINT

- Provides users the ability to perform a mapping of their own metadata schemas to reference domain models (LIDO, EDM, Carare Schema)
- Follows a typical web based architecture
- Supports multiple organizations
- Compatible with Europeana



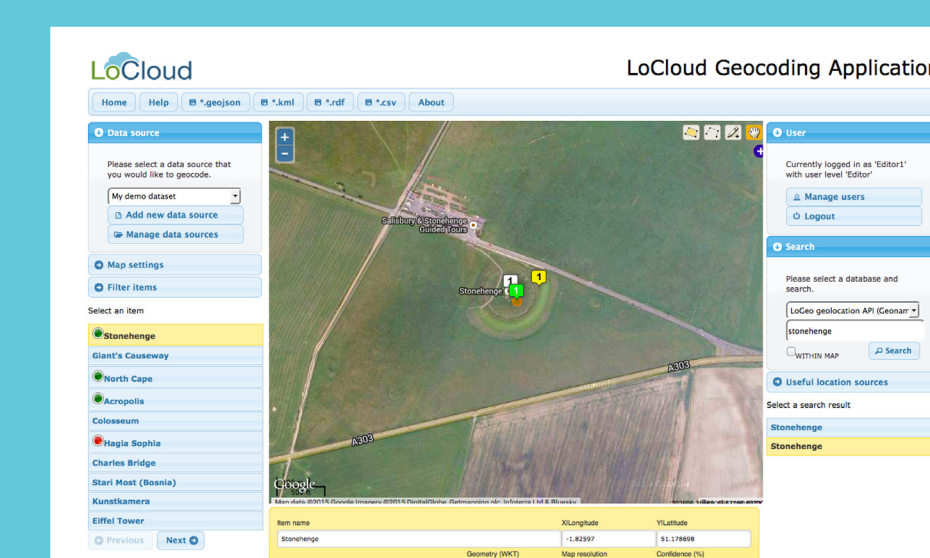
## Enrichment Micro-services

### Background Links

- Automatically links items in the collections to background information contained in Dbpedia pages.
- REST service

### Geo-coding

- Facilitates geocoding of existing cultural heritage data without location information that can be resolved to coordinates
- REST API support



### Vocabulary Matching

- Create, manage, publish, share, re-use of Ontologies, Taxonomies, Thesauri
- Multilingual vocabularies and format
- REST API support

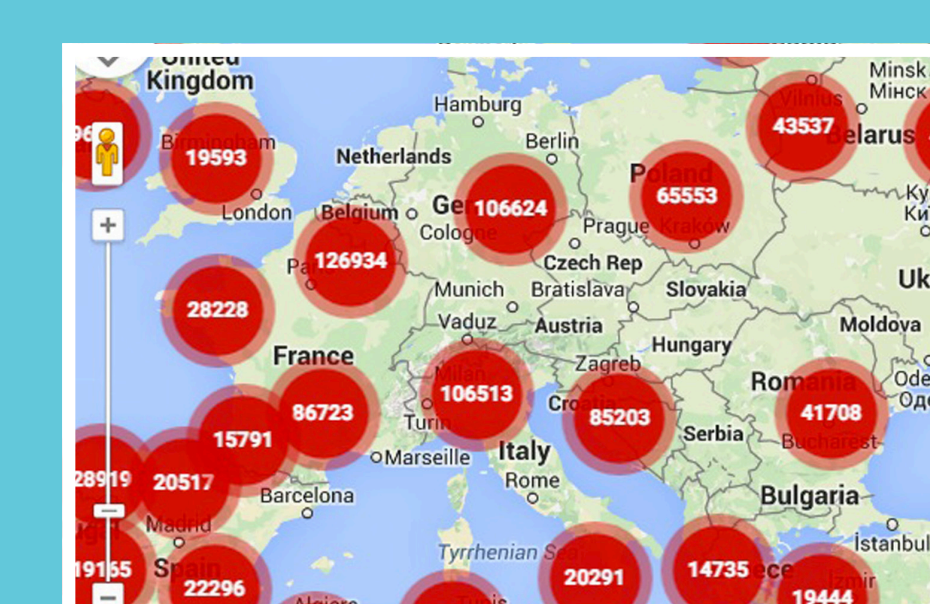


### Thesauri

- Automatically links relevant information from the metadata to relevant classes in a provided vocabulary.
- REST service

### Historic Place Names

- Semi-automatic historical geo-information management functions
- Designed for aggregation and enhanced usage of digital heritage information.
- REST API support



## Other Services

Wikimedia



Web Service that uses a REST interface Communicates with Wikimedia commons and facilitates the exchange of information which include:

- Title
- Description
- Date
- Image (url)
- Source

### LoCloud Crawler

A set of tools to automatically extract structured metadata from HTML web pages.

[www.locloud.eu](http://www.locloud.eu)

