

DELIVERABLE

Project Acronym: EAGLE
Grant Agreement number: 325122
Project Title: Europeana network of Ancient Greek and Latin Epigraphy

Report on the contributions to Europeana – third release

Deliverable 3.3.3

version: 1.0

Revision: final

Authors:

Valentina Vassallo (The Cyprus Institute)

Reviewers:

Claudio Prandoni (Promoter)

Project co-funded by the European Commission within the ICT Policy Support Programme		
Dissemination Level		
P	Public	X
C	Confidential, only for members of the consortium and the Commission Services	

Revision History

Revision	Date	Author	Organisation	Description
0.1	02/10/2015	Valentina Vassallo	The Cyprus Institute	First version
1.0	07/10/2015	Claudio Prandoni	Promoter Srl	Review and final version

Statement of originality:

This deliverable contains original unpublished work except where clearly indicated otherwise. Acknowledgement of previously published material and of the work of others has been made through appropriate citation, quotation or both.

TABLE OF CONTENTS

LIST OF ABBREVIATIONS.....	4
EXECUTIVE SUMMARY	5
1. INTRODUCTION.....	6
1.1 OBJECTIVES OF THE WP3 ‘METADATA MODEL, MAPPING AND INGESTION’	6
1.2 ROLE OF DELIVERABLE D3.3.3 IN THE PROJECT.....	7
2. CONTENT PROVIDERS AND COLLECTIONS.....	8
2.1 CONTENT PROVIDERS	8
2.1.1 Collections	9
2.1.2 Data Exchange Agreement (DEA).....	9
2.1.3 New affiliated partners.....	9
3. THE INGESTION PLAN	12
3.1 THE INGESTION PLAN FORM	12
3.1.1 Content assessment.....	13
4. IMPLEMENTING AND MONITORING THE INGESTION.....	14
4.1 THE INGESTION WORKFLOW	14
4.2 MONITORING OF THE MID-TERM INTERNAL MILESTONES	16
4.3. FEEDBACK.....	17
4.3.1 Direct contacts	18
4.3.2 Technical meetings.....	18
4.3.3 The EAGLE File Transfer Protocol	18
4.3.4 The D-Net metadata record inspector (EAGLE infrastructure).....	19
4.3.5 Europeana feedback	21
4.4. METADATA ENRICHMENT	22
5. REPORT ON THE CONTRIBUTIONS TO EUROPEANA	23
5.1 Inscriptions and visual representation: the Europeana publication	23
5.2 Report on the contribution ‘provider by provider’	27
6. CONCLUSIONS	38

LIST OF ABBREVIATIONS

ABBREVIATION	EXPLANATION
CP	Content Provider
DoW	Description of Work
EDM	Europeana Data Model
WP	Work Package
WG	Working Group
DEA	Data Exchange Agreement
TM number	Trismegistos number
CHO	Cultural Heritage Object

EXECUTIVE SUMMARY

This Deliverable is created by the Cyprus Institute (Cyl) and it is the result of the collaboration between WP3, WP2 and WP4. It reports about the third phase of the ingestion of EAGLE content towards Europeana, providing updates in the current figures and procedures.

The document is structured in 6 Chapters.

Chapter 1 is an introduction about the objectives of the Deliverable and its role in the project. It is an overview of the WP3 objectives, tasks and milestones.

Chapter 2 is dedicated to the Content Providers and their collections, with a specific focus on the new affiliated partners. Among them, the new contributors of data to the EAGLE project and to Europeana are highlighted. Moreover, it is provided the status of the Data Exchange Agreement (DEA) signed by the Content Providers for the data publication into the Europeana portal, as well as the status of the EAGLE agreements signed by the new affiliated partners for the provision of content (e.g. translations, pictures for Wikimedia, etc.) to the EAGLE project.

Chapter 3 is dedicated to the ingestion plan. Particularly, it provides information about the content assessment and the amount of data that will be sent to Europeana through the EAGLE project.

Chapter 4 is the summary of the workflow developed to monitor the ingestion, the different sources of information used to perform it and the collaboration with other WPs for the execution of the various activities.

Chapter 5 reports the actual contributions to Europeana, with a detailed description of the work done so far by each Content Provider, the new data ready to be harvested by Europeana and the results of the publication in the Europeana portal.

Finally, Chapter 6 draws the conclusions and gives information about the next steps in WP3.

1. INTRODUCTION

This document reports the activities carried out by Work Package 3 during the period 1st April 2015 – 30th September 2015. As already expressed in the first release of this Deliverable (D 3.3.1), the work reported here is strictly connected with the Deliverable 3.2, since they are parts of the same work aimed at the development of a methodology and of a workflow for the EAGLE content contribution into Europeana. The report shows all the steps of the workflow: the Content Providers' planning of the content is followed by the progress of the ingestion, the feedback collected and the monitoring of the contributions activities towards Europeana. All the topics already treated in the previous issue (Deliverable 3.3.2 'Report on the contributions to Europeana – second release') will be cited but not repeated in this Deliverable unless they are useful for the general comprehension or there are important changes and updates in the structure.

1.1 OBJECTIVES OF THE WP3 'METADATA MODEL, MAPPING AND INGESTION'

This and the following section are an overview of what already reported in the previous editions of this Deliverable, in order to recap what are the objectives of the Work Package 3, the deadlines and the targets of such activities.

WP3 'Metadata model, mapping and ingestion' is the core of the EAGLE project since it has to deal with the contribution of quality metadata and content from the individual partners to the EAGLE Aggregation and Image Management (AIM) infrastructure implemented within WP4 ('EAGLE Aggregation and Image infrastructure'). The common EAGLE metadata model to ensure full interoperability with Europeana has been defined within the WP3 (see Deliverable D3.1 'EAGLE metadata model specifications'). This is the basis for the local mappings. The work within the Work Package addresses all the specific activities that are needed locally to harmonize the content coming from the different sources and archives of the project partners and prepare it for the ingestion process. The work consists of the implementation of the agreed standards and protocols, the preparation of the necessary mappings for the metadata conversions, the ingestion plan itself and finally the publication of the content into Europeana portal, including appropriate disambiguation. The role of the Content Providers is that one of checking, enrich and contextualize their metadata thanks to the data curation developed within WP4.

The Cyprus Institute is the leader of the Work Package and leader of the tasks 'Planning and preparing the ingestion' and 'Implementing and monitoring the ingestion'. Other 3 Task leaders are associated: UAH ('Definition of the EAGLE metadata model' and 'Metadata mapping'); K.U.LEUVEN ('Duplicates identification') and UNIROMA1 ('Metadata enrichment and contextualization'). All the Content Providers are involved in the Work Package contributing to the mapping and the ingestion of their content to the EAGLE Aggregator and to Europeana.

The overall objectives of the Work Package 3 are:

- To achieve the large scale implementation of agreed standards and best practices at the local and institutional level across the Best Practices Network (BPN)
- To define the common EAGLE metadata structure to enable BPN metadata harmonization
- To define mapping from local BPN metadata structures to the common EAGLE metadata structure
- To define mapping from EAGLE metadata structure to Europeana Data Model (EDM), to ensure full interoperability with Europeana.

- To ingest content into EAGLE and Europeana
- To check, enrich and contextualize the aggregated metadata
- To improve the quality of content and metadata across the BPN

WP3 is in charge to organize the ingestion plan and the aggregation workflow from Content Providers to Europeana passing through the EAGLE Aggregator, to monitor the work progress and to assure that the Tasks and Milestones will be achieved.

The Milestones connected to this Work Package are:

- Month 18 (September 2014): 375.000 items available for Europeana (MS8)
- Month 24 (March 2015): 750.000 items available for Europeana (MS12)
- Month 30 (September 2015): 1.125.000 items available for Europeana (MS15)
- Month 36 (March 2016): 1.500.000 items available for Europeana (MS16)

The present Deliverable D3.3.3. 'Report on the contributions to Europeana – third release' illustrates the ongoing aggregation process, focussing on the monitoring of the ingestion and the data contribution to EAGLE and to Europeana. The cooperation between WP2 and WP4 is fundamental to carry out WP3 tasks.

This document reports about the work carried out from month 25 (April 2015), to month 30 (September 2015).

1.2 ROLE OF DELIVERABLE D3.3.3 IN THE PROJECT

The aim of Deliverable D3.3.3 is to report on the progress of the ingestion from the EAGLE Content Providers to Europeana. This Deliverable is important to assess the implementation and monitoring of the ingestion workflow. It is part of a set of WP3 Deliverables D3.3.X that report on the effective contribution of content to the EAGLE infrastructure and to Europeana. They are strictly connected with the achievement of the following Milestones: MS8 (Month 18) with the ingestion of 375.000 items available for Europeana; MS12 (Month 24) with the ingestion of 750.000 items available for Europeana; MS15 (Month 30) with the ingestion of 1.125.000 items available for Europeana; MS16 (Month 36) with the ingestion of 1.500.000 items available for Europeana. Table I reports the schedule of WP3 Deliverables and Milestones (in light blue, the current period):

MONTH	12	18	24	30	36
DELIVERABLE	D3.2	D3.3.1	D3.3.2	D3.3.3	D3.3.4
MILESTONE	-	MS8	MS12	MS15	MS16

Table I. WP3 Deliverables and Milestones.

2. CONTENT PROVIDERS AND COLLECTIONS

2.1 CONTENT PROVIDERS

In order to facilitate the reading of the present Deliverable, the list of the EAGLE partners and Content Providers is reported in Table II.

The project Consortium is composed of 19 partners from 12 different European countries. 14 are Content Providers and they will supply Europeana with Ancient Greek and Latin inscriptions with related metadata: 1.5 M images and related metadata (including translations of selected texts in Wikimedia) for the benefit of the users.

N.	Organisation	Country	Content Provider
1	UNIVERSITA DEGLI STUDI DI ROMA LA SAPIENZA	ITALY	✓
2	PARIS-LODRON-UNIVERSITÄT SALZBURG	AUSTRIA	✓
3	KATHOLIEKE UNIVERSITEIT LEUVEN	BELGIUM	
4	THE CYPRUS RESEARCH AND EDUCATIONAL FOUNDATION	CYPRUS	✓
5	EUREVA SAS	FRANCE	
6	CENTRE NATIONAL DE LA RECHERCHE SCIENTIFIQUE	FRANCE	✓
7	RUPRECHT-KARLS-UNIVERSITÄT HEIDELBERG	GERMANY	✓
8	DEUTSCHES ARCHAOLOGISCHES INSTITUT	GERMANY	✓
9	EÖTVÖS LORÁND TUDOMÁNYEGYETEM	HUNGARY	✓
10	UNIVERSITA DEGLI STUDI DI BARI "ALDO MORO"	ITALY	✓
11	THE BRITISH SCHOOL AT ROME	ITALY	✓
12	PROMOTER SRL	ITALY	
13	GOGATE SRL	ITALY	
14	CONSIGLIO NAZIONALE DELLE RICERCHE	ITALY	
15	SVEUCILISTE JURJA DOBRILE U PULI	REPUBLIC OF CROATIA	✓
16	ZNANSTVENORAZISKOVALNI CENTER SLOVENSKE	REPUBLIC OF	✓

	AKADEMIJE ZNANOSTI IN UMETNOSTI	SLOVENIA	
17	UNIVERSITATEA BABES BOLYAI	ROMANIA	✓
18	UNIVERSIDAD DE ALCALA	SPAIN	✓
19	THE CHANCELLOR, MASTERS AND SCHOLARS OF THE UNIVERSITY OF OXFORD	UNITED KINGDOM	✓

Table II. List of the EAGLE Partners and Content Providers.

2.1.1 Collections

The EAGLE content is constituted of inscriptions (texts) connected to digital images (photographs, drawings, scanned notes, manuscripts and archive material, ancient books) and their related metadata. At present, there are no changes or updates regarding the type of collections that will be provided to the project with respect to what has been reported in D3.2.

2.1.2 Data Exchange Agreement (DEA)

An important requirement for the content provision and publication into Europeana is the signature of the Europeana Data Exchange Agreement by all EAGLE Content Providers. As explained in Deliverable D3.2 “Ingestion plan” and in the successive D.3.3.1 and D.3.3.2 ‘Report on the contributions to Europeana’ (first and second release), every Content Provider supplying content to Europeana has to subscribe the Agreement. WP3 (together with WP1) checks who signed and who is missing in order to keep under control the publication process in Europeana from the ingestion point of view. At today, all the EAGLE Content Providers signed the DEA and their contents started to be transmitted to Europeana for the publication in the Europeana portal.

2.1.3 New affiliated partners

One of the aim of the project, carried out by WP2 ‘Networking and best practices’, is to attract new content providers to the EAGLE network, in order to increase the quantity and quality of the EAGLE digital resources. Content providers from outside the Consortium are encouraged to join the Best Practice Network and to contribute with their content. All the content providing partners are asked to participate in the task of recruiting new content providers.

WP3 assists WP2 to monitor these activities of network enlargement and to elaborate an action plan for the institutions that show interest in participating in the project activities. WP3 monitors the involvement of the stakeholders that will contribute with their content to EAGLE and to Europeana¹.

At September 2015, 12 affiliated partners signed the agreement with the EAGLE project². Among the new affiliated partners, some have expressed their interest to contribute to the project and have already

¹ The methodology and the activities about the enlargement of the network are described in the Deliverable D.2.1 ‘Networking infrastructure and terms of reference’.

² They correspond to 14 collections.

started to put their data at disposal of the project. Other institutions declared their interest to participate in the project. For these organizations, the affiliations' agreements are currently under discussion and/or preparation.

Table III summarises the contributions of the new Content Providers who joined the EAGLE network and of those who expressed their interested in doing so. Please, refer to the Chapter 5 for a report on the data provided so far by all the Content Providers of the project (including both old and new Content Providers).

Organisation	Contribution	Agreement
Inscriptions of Aphrodisias (KLC)	Contribution to EAGLE and to Europeana (1.505 items)	Signed
Roman Inscriptions of Britain	Contribution to EAGLE and to Europeana (2.401 items)	Signed (under University of Oxford)
Centre for the Study of Ancient Documentation	Contribution to EAGLE and to Europeana (386 items)	Signed (under University of Oxford)
The Israel Museum	Contribution to EAGLE and to Europeana (18 items)	Signed
Pontificia Commissione di Archeologia Sacra	Contribution to EAGLE and to Europeana (via EDB)	Signed
Cittá di Anagni	Contribution to EAGLE and to Europeana (10 photos)	Signed
Iscrizioni Latine Archaiche (ILA)	Contribution to EAGLE and to Europeana (80 items)	Signed
AshLi project	Contribution to EAGLE and to Europeana (300 inscriptions)	Signed
EPNet	Contribution to EAGLE and to Europeana (ca. 37.000 items)	Signed
Attic Inscriptions Online	Translations in the EAGLE Media Wiki	Signed
University of Beograd	Photos to Wikimedia Commons	Signed
Historical Institute of Montenegro	Photos to Wikimedia Commons	Signed
Inscriptiones Graecae	Contribution to EAGLE and to Europeana (text and translations)	Waiting for approval
US Epigraphy project	Contribution to EAGLE and to Europeana	Waiting for approval

Topoi project Berlin Humbolt University	Contribution to EAGLE and to Europeana (texts of christian inscriptions)	Waiting for approval
EDCS	Contribution to EAGLE (500.000 inscriptions with photos)	(to be confirmed)
CLE Galliae – Hispaniae	Contribution to EAGLE and to Europeana	(to be confirmed)
Inscriptiones from Israel-Palaestinae	Contribution to EAGLE and to Europeana (ca. 1730 items)	(to be confirmed)
Inscriptions from Attica, Dalmatia and Pompei from the SFB993 project	Contribution to EAGLE and to Europeana (ca. 1000 items)	(to be confirmed)
Iliia State University	Contribution to EAGLE and to Europeana (1 item)	(to be confirmed)
ISicily	Contribution to EAGLE and to Europeana	(to be confirmed)

Table III. Contributions of the new affiliated partners and status of the signature of the DEA for the content provision to Europeana and of the EAGLE agreements for the content provision to the EAGLE project.

3. THE INGESTION PLAN

The tasks of WP3 started at M1 (April 2013) and will last for the whole duration of the project (M36, March 2016). The ingestion plan consists of all the activities on which is based the EAGLE aggregation procedure and the content delivery to Europeana: surveys, technical sessions, partners support, procedures, methodologies, feedback and milestones. WP3 manages the planning and preparation of the ingestion and as well as its implementation and monitoring.

Task T3.3. “Planning and preparing the ingestion”, which concluded in March 2014, is connected with task T3.4. “Implementing and monitoring the ingestion” (that lasts until the end of the project). In this task, the Content Providers apply the best practices and implement locally the necessary workflows and procedures to ensure the continuous provision of metadata, surrogates and digital content through the EAGLE Aggregator (WP4) to Europeana.

The task of the WP3 leader is to ensure that the Content Providers make their content available according to the project schedule and that they provide the content declared. The WP3 leader started to operate the monitoring of the content ingestion into Europeana and of its progress since month 12 (March 2014). Every 6 months, WP3 reports about this monitoring activity and on the contribution to Europeana.

3.1 THE INGESTION PLAN FORM

As described in the Deliverable D3.2 “Ingestion plan”, in order to keep under control the content delivery to Europeana and to monitor the contributions against what was declared in the Description of Work (DoW), a working tool has been elaborated. The ingestion plan form is useful to keep trace of the Content Providers information about the items they will provide to Europeana, along all the project period.

The tool is used to confirm or update the content declared in the EAGLE Description of Work, to describe the status and the availability of the collections to be ingested and to monitor the ingestion progress. The ingestion plan form is kept updated according to the new deadlines and Milestones. In Table IV the updated document is provided with the new fields related to the periods to be monitored.

No	Short Name	DEA	DoW	Second Survey	MS8 (Sept 2014)	MS12 (Mar 2015)	MS15 (Sept 2015)
1	UNIROMA1	✓	60.000 images (photographs and drawings)	60.000
2
...
TOTAL			1.475.198

Table IV. Template of the ingestion plan form

The ingestion plan form data are cross-checked with the information gathered through other working tools and with the feedback coming from all the project's partners. The result is a synthesis of all the analytical reports of the Content Providers' contributions to EAGLE and Europeana.

3.1.1 Content assessment

The ingestion could be influenced by technical and administrative changes within the partner institutions. As experienced in other Europeana sisters projects, sometimes the digital content committed in the DoW is no more available (for different reasons) and needs to be replaced. In other cases some providers may be late in the content provision. Since these issues could have an impact on the final content provision, it is important to keep under control the total provision.

This activity is strictly connected with the update of the ingestion plan form (paragraph 3.1) and the monitoring of the mid-term internal milestones created by WP3 to follow closely the progress of the ingestion and the number of data which are available (see paragraph 4.2). As explained in the previous Deliverables, WP3 launched a set of surveys to monitor the content to be provided to Europeana (Task 3.4 'Implementing and monitoring the ingestion'). Content Providers have been periodically asked to provide information about their collections, the amount of data to be provided, if there is any variation with respect to the Description of Work and if they are experiencing any delay or problem in the content provision.

The issues that came as a result of these surveys are at the moment the same of those which were highlighted in the previous Deliverable D3.3.2, namely:

- UAH declared to have some difficulties in the collection, preparation and enrichment of their data that are causing a delay in their ingestion procedure (difficulties that are due to copyright issues and to the complexity of their metadata structure that needs more time and work to be mapped in the EAGLE and Europeana metadata models).
- The exact amount to be provided by AUSONIUS is still under definition.

However, during the present period both institutions progressed in the provision of the content (see Chapter 5).

The remaining Content Providers confirmed or increased the amount of items committed in the DoW and their contribution is progressing without significant delays (see Chapter 5 for the detailed information about each Content Provider).

4. IMPLEMENTING AND MONITORING THE INGESTION

This section is an update of the same section which was included in Deliverable D3.3.2. It is reported again here in order to provide an overall picture of the process.

In Task 3.4 'Implementing and monitoring the ingestion', each Content Provider applies the best practices and implements locally the necessary workflows and procedures to ensure the continuous provision of metadata, surrogates and digital content for ingestion to the EAGLE Aggregator (WP4) and to Europeana.

The WP3 leader ensures the monitoring of the ingestion of new content into Europeana as planned in T3.3. The aim of this task is:

- to ensure that the work of aggregation keeps pace with the releases of Europeana;
- to ensure that the work of metadata mapping keeps pace with the releases of Europeana;
- to ensure that the work of ingestion keeps pace with the releases of Europeana.

Work Package 3 is in charge of facilitating the content provision from the EAGLE partners to Europeana and of monitoring possible changes or delay that might occur, keeping track of any possible deviation from the Description of Work or from what has been declared by the Content Providers during the assessment phase (surveys, direct contact, emails, etc.).

4.1 THE INGESTION WORKFLOW

This section is a summary of the workflow implemented within the EAGLE project, and it explains the relationships between the Work Packages involved (particularly WP3 and WP4), the Content Providers and Europeana ingestion team³. The workflow starts from the work of the Content Providers, passes through the activities of WP3 and WP4 and finishes at the Europeana ingestion team, starting again in a cyclic way in case there is the need of adjustments or updates of the content provided (Fig. 1).

The workflow consists of four steps and is useful to follow how the aggregation and monitoring process is being carried out within EAGLE and which cooperation mechanisms among the project WPs, Content Providers and Europeana is being set up.

- First step: preparation, export and upload of the data.

The first step of this procedure consists of the work of the Content Providers to prepare their collections, export and upload the data. Content Providers have to guarantee the online access to their collections and that they are compliant with the EAGLE and Europeana requirements. For this reason, the providers have to guarantee that these elements are supplied in their metadata schemas before the mapping into EAGLE and of course that all the resources are available online. Content Providers have to export their metadata from their collection management system in XML format and send them to the EAGLE infrastructure through the export system implemented by each provider, if any (via OAI-PMH, FTP, HTTP), or through the FTP server implemented by WP4 for those they have no export mechanisms.

³ For the full description, see the Deliverable 3.2 'Ingestion plan'.

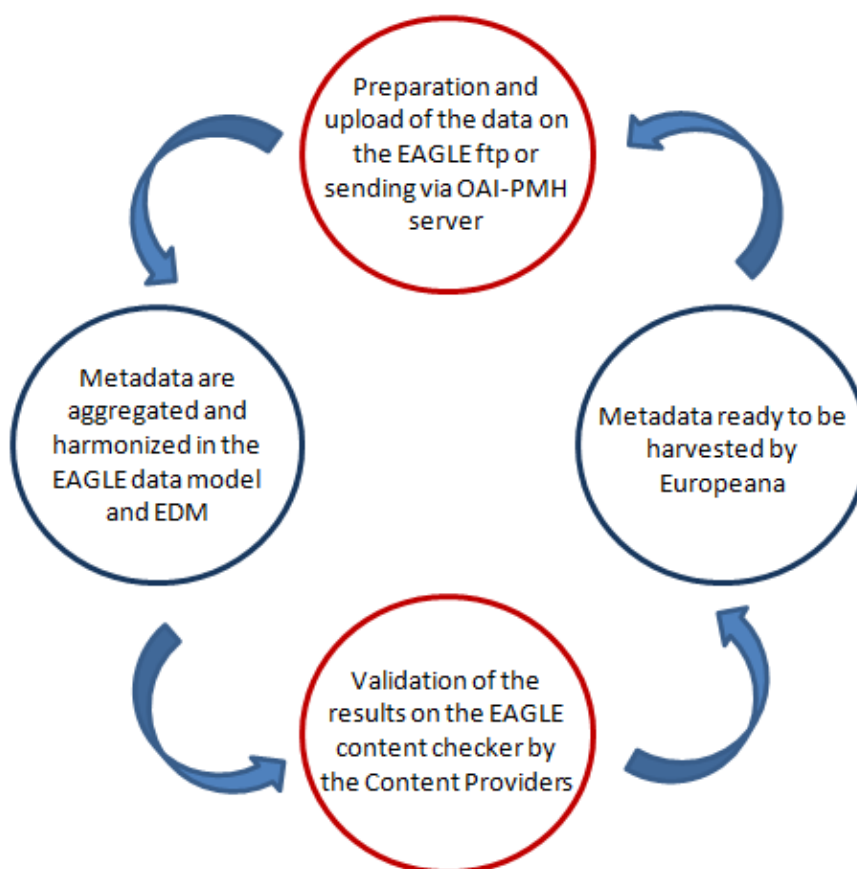


Fig. 1. The ingestion workflow

- Second step: data aggregation and harmonization

The second step is implemented in the aggregation platform developed by CNR-ISTI, leader of WP4. The platform is a customized version of the D-Net software. It is the web environment that allows WP4 to upload the project's Content Providers data and to map them to the EAGLE metadata schema and to EDM in order to send the data to Europeana.

The ingestion service enables:

- the data uploading of the Content Providers' data;
- the mapping and transformation of the metadata records into EAGLE records and the aggregation in the repository;
- the validation of the content;
- the mapping and transformation of the EAGLE data into EDM and the final transmission to the Europeana ingestion team via OAI-PMH.

The mapping for the transformation into the EAGLE common metadata format, within the EAGLE infrastructure, is done on the basis of the specifications given by the CPs⁴. After this step, the EAGLE data are transformed in EDM in order to be harvested by Europeana for the publication in its portal.

⁴ The specifications are published in the Deliverable D3.1 "EAGLE metadata model specification".

- Third step: validation of the results

Content Providers have to check the results of the transformation⁵. Task 3.2 started in January 2014 and will last until March 2016 with the aim of preparing the necessary mappings for the metadata conversions in order to allow the alignment of proprietary provider's metadata schemata with the EAGLE schema. This means that Content Providers have to keep under control the results of their mapping and provide a continuous validation of the results, updating them if necessary. WP3, responsible for the metadata mapping (the University of Alcalà is in charge of leading this task) together with WP4 and the Content Providers, will maintain updated the metadata mappings until the end of the project. WP3, WP4 and the Content Providers, carry out together the monitoring, validation and revision of the mappings and of the data for the publication in the EAGLE infrastructure. The feedback procedure helps to achieve this result.

- Fourth step: EAGLE publication and Europeana harvesting

The last step consists of the mapping and transformation of the EAGLE metadata schema into EDM and the consequent Europeana harvesting of the transformed data. After the transformation, the metadata are published by WP4 in the EAGLE OAI-PMH server and made available for Europeana to harvest them.

4.2 MONITORING OF THE MID-TERM INTERNAL MILESTONES

According to the ingestion plan, WP3 asked to all the Content Providers to contribute to the September deadline (Milestone 15), distributing their work during the period April -September 2015. As usual, WP3 asked to the Content Providers to declare in advance the amount of data they ingest monthly. The internal intermediate deadlines are aimed at a continuous monitoring and assessment of the ingestion process, to check the work done and plan the next steps. The comparison of the results achieved with the objectives and milestones planned at the beginning of the project is of great importance for the evaluation of possible bottlenecks, to prevent them and to look for the right solution on time.

In Chapter 5 'Report on the contribution to Europeana' it is reported the actual provision of content from all the Content Providers to the EAGLE infrastructure and how many are ready to be harvested by Europeana for the final publication.

Given that only 6 months are left to the end of the project, WP3 is already asking to the Content Providers to make the last effort and make an estimate of the monthly ingestion until March 2016, trying to avoid a last minute bottleneck towards the end of the ingestion work.

N.	Provider	Oct 2015	Nov 2015	Dec 2015	Jan 2016	Feb 2016	March 2016		
							MS16:	1.500.000	items (100%)
1	UNIROMA1						60,000		
2	UNIBA						45,000		

⁵ The EAGLE infrastructure allows the Providers to check the results and allows to check that the files ready to be delivered to Europeana are correctly transformed and are compliant with Europeana technical requirements.

3	UHEI					68,000
4	UOXF					1,500
5	UAH					235,000
6	PLUS					51,000
7	UBB					4,000
8	ELTE					1,500
9	UNIPU					2,000
10	ZRC SAZU					400
11	AUSONIUS					5,000
12	DAI					1,000,000
13	CYI					442
14	BSR					1,356
	TOTAL					1.475.198

Table V. Template of the mid-term internal plan form created for the last period

4.3. FEEDBACK

This section is a simplified repetition of what is already described in the previous Deliverables. The section is maintained as a reference and to facilitate the general reading of the present document.

Collecting feedback is an important step in the monitoring of the ingestion procedure. This activity uses different sources of information in order to:

- collect information from the users to face their problems in the aggregation process;
- answer content providers' requests to overcome their difficulties;
- define an effective ingestion methodology and its monitoring.

The feedback collection methodology is part of the general methodology developed for the contribution of data to Europeana. Feedback is important because it helps WP3, WP4 and the Content Providers themselves to refine and improve the ingestion process and to support the contribution of this medium/large amount of content to Europeana.

The feedback is collected by making use of several tools and sources of information, particularly:

- direct contacts with the Content Providers
- technical meetings
- the EAGLE FTP

- the Metadata Record Inspector of the EAGLE infrastructure
- Europeana feedback

Thanks to these source of information, the progress of the ingestion is documented and recorded in the working tools elaborated by WP3 (and shared with WP4), where it is possible to report all the information that has been collected. The 'Report on the contribution to Europeana' makes use of all these elements and of the crosscheck of the information coming from the different tools and actors participating in the project.

4.3.1 Direct contacts

As reported in Deliverable D3.2 'Ingestion plan', WP3 established direct relationships with the Content Providers. WP3 is periodically and constantly in contact with the Content Providers through e-mails and Skype calls in order to monitor the progress of their work, to inform about news and updates, discuss about any kind of issues that they may encounter, clarify doubts, explain the Europeana technical reports (see paragraph 4.3.5), etc. These kind of contacts complement the valuable face-to-face meetings, usually carried out during the plenary meetings of the project (see paragraph 4.3.2). Together with the direct communications, the EAGLE mailing list are used to inform about the general requirements and deadlines and to get general feedback from the Content Providers.

All the results of these communications are reported in the working tool elaborated by WP3 to follow the Content Providers' ingestion, from the upload of the content in the EAGLE infrastructure until its publication in Europeana, in order to monitor the available content and the progress of the ingestion. The working tool is the document that helps to keep updated the information and the communication between WP3 and Content Providers, drawing a personal history in a way which is easy and fast to read and to consult⁶.

4.3.2 Technical meetings

In the occasion of the EAGLE Plenary meetings (24-25 October 2013, Pisa; 18 February 2014, Ljubljana; 10 March 2015, Nicosia) WP3 and WP4 organised dedicated sessions to discuss with the Content Providers about all the technical aspects of the project: the EAGLE metadata schema, the use of the ingestion platform, the ingestion procedure and the aggregation to Europeana. The aim of these meetings was to keep informed the Content Providers about the technical progress of the project and to give them direct assistance for the delivery of the content to Europeana.

In the occasion of the last Plenary meeting in Bari, Italy, (23 September 2015), WP3, WP4 and the Content Providers checked together (also with dedicated face-to-face meetings for a direct assistance) the status of the ingestion and discussed about the technical requirements in the light of the fulfilment of the Milestone 15 (MS15)⁷.

4.3.3 The EAGLE File Transfer Protocol

A dedicated EAGLE File Transfer Protocol (FTP) was established to upload data from the Content Providers that do not have at disposal an OAI, FTP or web APIs to enable WP4 to collect data in a

⁶ For a detailed description of the monitoring file, please refer to Deliverable 3.2 'Ingestion plan'.

⁷ The next technical meeting is planned to be held in Rome, during the final EAGLE plenary meeting (January 2016).. It will be discussed with the technical and project coordinators if any further meetings will be needed before the end of the project (March 2016).

programmatic way. The remaining Content providers sent their content via their OAI-PMH servers or FTP protocols.

Through the access to the EAGLE FTP server, WP3 (as well as WP4 and the Content Providers themselves) is able to monitor the upload of the content carried out by each Content Provider (Fig. 2). Every Content Provider can upload its content in a dedicated folder; WP3 can visualize the number of files that has been sent to the EAGLE server and the last modification done. In this way, WP3 has a clear overview of the amount of data that the Providers prepared and can keep track of their work⁸.

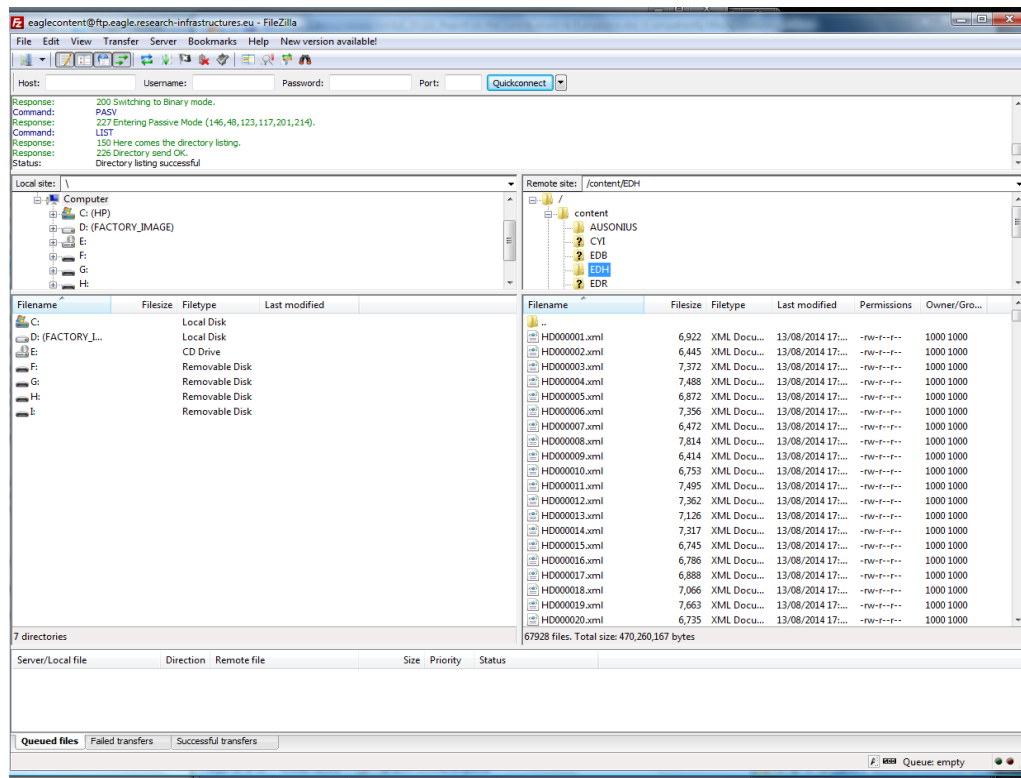


Fig. 2. The EAGLE FTP server

4.3.4 The D-Net metadata record inspector (EAGLE infrastructure)

This source of information is very useful to get an analytical overview of the actual content ingestion.

The D-Net data report functionality provides features that allow to make detailed reports both for the single content providers and for WP3 and WP4 coordinators. The partners can have a quick overview of the amount of metadata uploaded and transformed in the EAGLE infrastructure. The coordinators can supervise the work of all the contributors. The data report offers to the users a breakdown of all the items uploaded in the tool, provider by provider, and of the subsequent transformation operated after the mapping to the EAGLE metadata schema (Fig. 3).

⁸ The control of the data amount of the Providers that send their content through OAI server is carried out monitoring them directly.

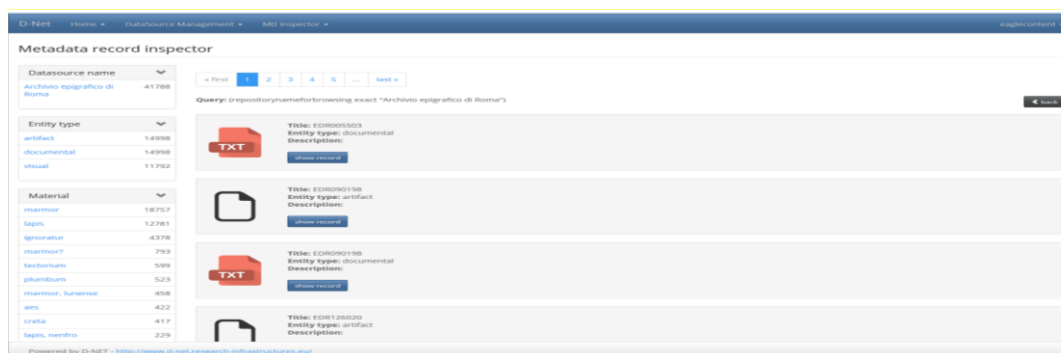


Fig. 3. The metadata record inspector: the amount of data of a Content Provider

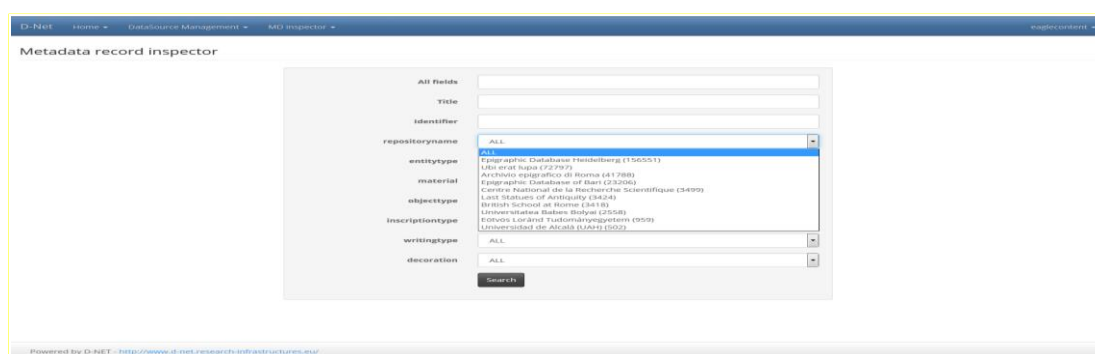


Fig. 4. The metadata record inspector in D-Net: the list of the institutions that aggregate data for EAGLE Project.

Finally, the last functionality is the visualization of the metadata details, with the generation and visualization of all the element wrappers that constitute the metadata record (Fig. 5). In this way, the Content Providers can operate a quality control of the data, by identifying easily, through a user-friendly interface, the content that they provided and which are the data that need to be possibly adjusted or enriched.

This feature includes also the possibility to verify the relationships between the various items (artefacts, documental manifestations and visual manifestations), allowing the Content Providers to check the correctness of that the data that they provided to the EAGLE portal and to Europeana.

D-Net Home DataSource Management Configuration MD inspectors eaglecontent

EDR133519

GENERAL INFORMATION

Title	EDR133519
Description	
Provided by	Archivio epigrafico di Roma
Landing page	http://www.edr-edr.it/edr_programmi/res_complex_comune.php?do=book&id_nr=EDR133519 <small>This HAS to resolve on a valid page!</small>
Local identifier (a.k.a. CP-ID)	http://www.edr-edr.it/edr_programmi/res_complex_comune.php?do=book&id_nr=EDR133519 <small>This MUST be an ID, not an URL!</small>
Last edit	1970-01-01
Edited by	Lucio BENEDETTI2
Collected on	2014-10-08T11:57:28+02:00

ARTIFACT DETAILS


Object type	stela
Material	marmor
Dimensions	0.00 x 0.00 x 0.00 (cm)
Decoration	
Places	Roman province italic region Ancient find spot Modern find spot Roma, tra via Salaria e via Pinciana, sepolcreto Modern country

INSCRIPTION DETAILS

Inscription type	sepulcralis
Engraving	scalpro
Metre	
Paleographic characteristics	
Dimensions	Field size ?? x ?? (cm) Letter size ?? x ?? (cm)

CONNECTED ENTITIES

Transcription [EDR:c406b86aa0bc02ff0b3dbdcf6e2d40bc:transcription](#)

Visual representation 

Powered by D-NET - <http://www.d-net.research-infrastructures.eu/>

Fig. 5. The visualization of the metadata details and content

4.3.5 Europeana feedback

The feedback from Europeana is an important step to ensure that the content provided to the portal complies with Europeana's requirements and that is ready to be published.

After the publication in the EAGLE infrastructure, WP3 is in charge to inform the Europeana Operations Team of the datasets that are ready for the harvesting. In agreement with the Europeana team, WP3 organises the process and the deadlines from the Content Providers side and then communicate to Europeana the datasets ready to be harvested.

Once the datasets of the providers have been harvested, Europeana Operations Team starts a process of quality control. After circa fifteen days Europeana sends to WP3 a validation report and WP3 informs the Content Providers and WP4 about the quality feedback and the possible remedy actions to be performed on the datasets before the final publication in the portal. In this case, the procedure has to be repeated in order to adjust/fix the content. If no adjustments are needed, the dataset is finally published on the Europeana portal.

This feedback is also important to calculate the effective amount of data published in the Europeana portal after the ingestion workflow.

In accordance with the Europeana ingestion team, the harvesting is every 21st of the month. The WP3 leader, on the base of other projects' experience, decided to set up an internal anticipated deadline for the upload of the EAGLE items on the EAGLE FTP server (or via the Providers' FTP and OAI-PMH servers), in order to be ready on time for the actual data harvesting by Europeana and to check possible issues that may arise during the data processing in D-Net. In the 15 days that follows the harvesting, Europeana processes the data and, if there are no further issues, the harvested datasets are published online in the portal (Table VI).

Upload on the EAGLE FTP server (internal deadline)	WP3 sends to Europeana the datasets ready to be harvested	Europeana publishes the records in the portal
15th of the month	21st of the month	ca. 15 days after the harvesting

Table VI. Deadlines for the Europeana harvesting

During the period April – September 2015, due to Europeana internal technical issues that delayed and stopped the harvesting, there has been a lack of feedback regarding the content ingested by the Content Providers. The last validation report is dated back to June 2015 (related therefore to the EAGLE May publication). See paragraph 5.2 and 5.3 for a detailed report about the issues encountered in the cooperation with Europeana.

4.4. METADATA ENRICHMENT

The enrichment work continued throughout all the period with the new content ingested in the EAGLE infrastructure and is operated through the following steps:

- a check of the content through the D-Net metadata record inspector (see Section 4.3.4);
- duplicates identification
- enrichment through the use of the EAGLE controlled vocabularies developed in WP2
- enrichment through the translations developed in WP2.

Since there are no updates in this procedure, for further details please refer to the corresponding Section in Deliverable D3.3.2.

5. REPORT ON THE CONTRIBUTIONS TO EUROPEANA

5.1 Inscriptions and visual representation: the Europeana publication

The aim of WP3 is to coordinate the content provision of the partners to Europeana through the EAGLE infrastructure. For this reason, WP3 operates a continuous monitoring about the data to be provided, checking of any possible delays or problems that may have a negative impact on the content provision (see Chapter 4 for a detailed description of the procedure).

During the period under report, all the Content Providers worked to meet the deadlines and sent the content to the EAGLE Aggregator in order to upload and map/transform their data in the technical infrastructure. They prepared and adjusted their data in order to export the content and make it compliant with EAGLE and Europeana specifications. Few Providers are still facing some technical issues and they are working to solve them.

The majority of the Content Providers sent the planned amount (75% of the total amount as described in the DoW) through FTP or via OAI-PMH servers to the EAGLE Aggregator. Some of them uploaded even more items than what was planned. In some cases the Providers already met the final deadline of the project, overcoming the target of Milestone 15.

The content provided by the Consortium, due to the transformation into the EAGLE metadata model, will produce three different groups of metadata according to the digital objects they are connected to, namely: artefacts, documental manifestation, visual representation. Artefacts (i.e. the information related to the physical carrier of the inscription, including the text of the inscription) and visual manifestations (i.e. the images) are those that are sent to Europeana.

At today, the EAGLE OAI-PMH server contains 358.222 artefacts and 723.112 visual representations, for a total of 1.081.334 items (already harvested or ready to be harvested by Europeana), i.e. 72% of the total amount. Milestone 15 is therefore almost achieved.

Table VII presents the status of the ingestion at September 2015, comparing what each Content Provider actually delivered to the EAGLE Aggregator with what was planned for this Milestone (MS15), i.e. 75% of the total amount foreseen in the DoW. All the issues encountered by the Content Providers are reported in the last column ('Comments'). Among them, the most important ones are:

- The contribution of partner UAH, who is facing several problems related to copyright issues and to the complexity of their metadata schema who is difficult to be mapped to EAGLE and Europeana models.
- The contribution of partner Cyl, whose mapping to the EAGLE and Europeana models is still under completion, for mapping issues due to the peculiarity of its metadata schema (however, their items are already available).

All the other issues are under control.

No.	Short Name	Planned amount (MS15)	Actual amount uploaded in EAGLE	Artefacts	Visual representations	Comments
1	UNIROMA1	45.000	104.396	64.888	39.508	They are temporarily covering part of the amount of ZRC-SAZU, while their technical issues is being solved (see below)
2	UNIBA	30.000	41.045	34.538	6.507	
3	UHEI	50.000	85.125	69.057	16.068	
4	UOXF	1.125	7.124	2.836	4.288	
5	UAH	176.250	99.453	28.413	71.040	Delay due to copyright issues related to the content of about twenty file-cards cabinets in which are stored data from inscriptions found in Portugal and Spain and to the complexity of the organization of the file cards archive
6	PLUS	38.250	65.703	24.970	40.733	
7	UBB	3.000	1.938	1.328	610	Some items are missing but they are working to make them available for the final provision
8	ELTE	1.125	1.095	582	513	
9	UNIPU	1.500	2.437	1.227	1.210	
10	ZRC SAZU	300	0	0	0	The items have been sent to EDR, but for technical problems their ingestion has been postponed. Meanwhile they are replaced by 300 items from EDR

11	AUSONIUS	3.750	3.245	1.608	1.637	Few items are missing but they are working to make them available for the final provision
12	DAI	750.000	658.444	122.703	535.741	They are working to fix some technical issues that delayed their ingestion
13	CYI	330	0	0	0	They are working to fix some issues due to the mapping and transformation into EAGLE metadata
14	BSR	1.017	2.428	1.025	1.403	
15	InsAph	0	4.522	1505	3017	New provider
16	RIB	0	2.401	2401	0	New provider
17	MAMA	0	1.205	386	819	New provider
18	IMJ	0	36	18	18	New provider
19	Vindolanda	0	737	737	0	New provider
	TOTAL	1.125.000	1.081.334	358.222	723.112	MS15 almost achieved

Table VII. Contribution to Europeana for the MS15 (September 2015): content available in the EAGLE Aggregator

As said above, according to what Europeana accepts to be published in its portal, the data that are sent to Europeana belong to the category of the artefacts (the inscriptions represented as texts, called by Europeana “CHO” or “Cultural Heritage Object”) and of the visual representation (the images related to the inscriptions, called by Europeana “WebResource”).

The distinction between CHO and WebResource has been introduced as a result of the introduction of the new EDM schema to provide the users with a better navigation and data retrieval and to aggregate under the same umbrella all the resources available for a Cultural Heritage Object, avoiding data duplication in the portal. For this reason, the WebResources are not anymore explicitly counted in Europeana in the numbering of the items, as they are linked to the CHO through the ore:Aggregation field, however they have their own meaning as they bring along their metadata and rights. This means that in the Europeana portal, the only items explicitly visible on the front-end are the CHOs.

Therefore, in order to calculate the total amount of items published in the portal, the Europeana ingestion team provides WP3 and WP4 leaders with the result of the statistics concerning the number of the CHOs and of the WebResources for each Content Provider.

Table VII presents the total figures calculated by Europeana for each EAGLE Content Provider in June 2015.

Data Provider (Europeana IDs)	Number ProvidedCHO	Number WebResource	Total
Epigraphic Database Roma - EDR (europeana_collectionName:2058806*)	61.218	5.094	66.312
Epigraphic Dabatase Bari - EDB (europeana_collectionName:2058807*)	32.082	827	32.909
Epigraphische Datenbank Heidelberg - EDH (europeana_collectionName:2058801*)	67.994	7.159	75.153
Last Statues of Antiquity - UOXF (europeana_collectionName:2058803*)	2.836	2.998	5.834
Hispania Epigraphica Online - HEpOI -UAH (europeana_collectionName:2058808*)	26.826	35.140	61.966
Ubi erat lupa - PLUS (europeana_collectionName:2058805*)	24.681	20.001	44.682
Universitatea Babes Bolyai - UBB (europeana_collectionName:2058810*)	1.293	104	1.397
Eötvös Loránd Tudományegyetem - ELTE (europeana_collectionName:2058809*)	440	217	657
PETRAE - AUSONIUS - AUSONIUS (europeana_collectionName:2058804*)	1.332	286	1.618
British School at Rome - BSR (europeana_collectionName:2058802*)	1.022	513	1.535
Arachne (DAI) (europeana_collectionName:2058811*)	126.620	227.544	354.164
Total	346.344	299.883	646.227

Tab VIII. Europeana statistics: amount of CHOs and WebResources published in the Europeana portal - June 20159.

⁹ As it can be seen from the figures of the Table VIII, there is a difference between the Europeana statistics and the number of the items published by each Content Providers in the Table VII. This is due to the fact that the last statistics at our disposal refer to the publication in the Europeana portal in June 2015, since no other publications occurred after that.

During the present reporting period, several batches of content have been communicated to the Europeana Operations Team, on a monthly basis, but only few of them have been harvested by Europeana so far:

- The first and second batches have been published in the Europeana portal: the last publication is dated back to June 2015 and it consists of the EAGLE May publication.
- The successive monthly batches are still under publication due to Europeana’s internal delays and problems.

Fig. 6 shows the EAGLE data currently published in the Europeana portal. As already said, the data are dated back to the last harvesting of Europeana in June 2015 and therefore they refer to the data provided by EAGLE in May 2015. From June until the beginning of September no harvesting have been performed by Europeana due to internal technical problems. That’s why not all the data provided by EAGLE are visible online in Europeana’s portal.

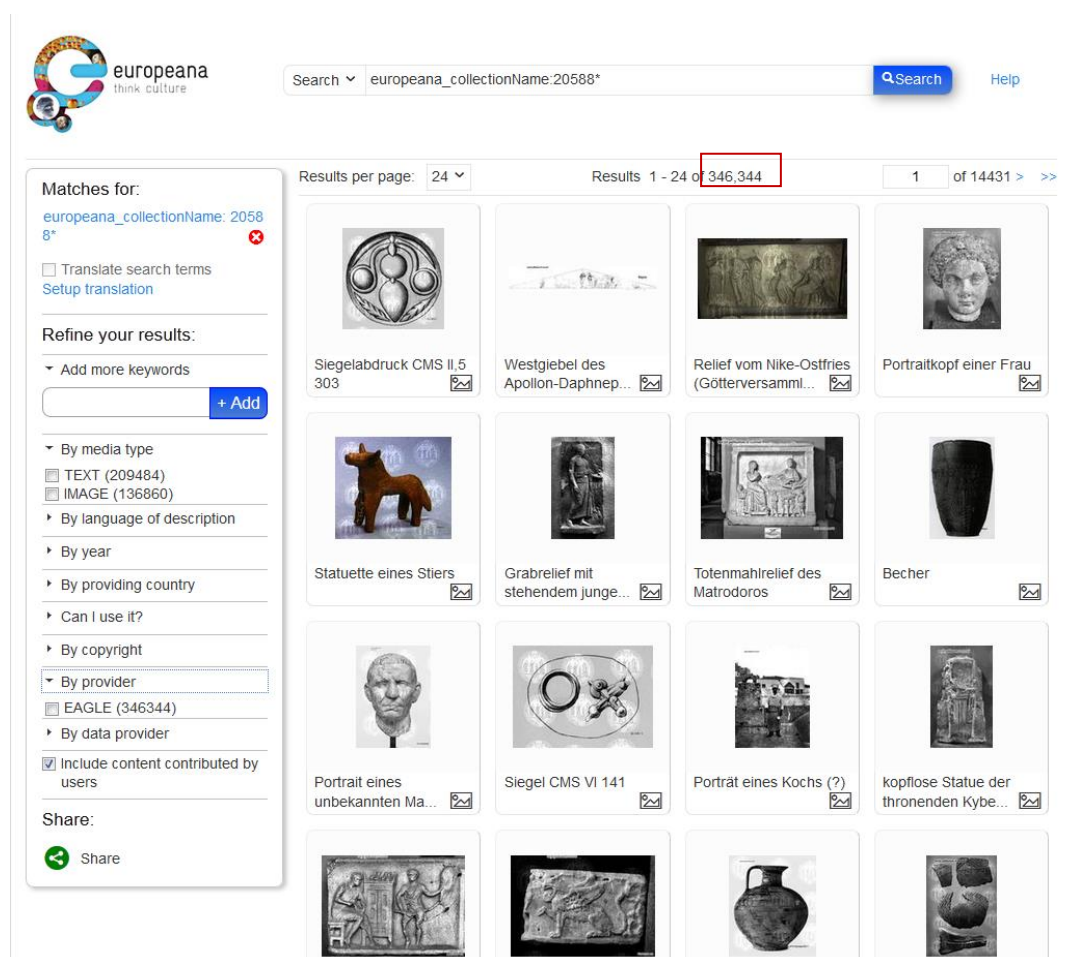


Fig. 6. The EAGLE data published in the Europeana portal (September 2015)

5.2 Report on the contribution ‘provider by provider’

The following tables presents in details the status of the contribution of each Content Provider. The tables have to be read following the colours and their staggered path. For example, what has been published in

EAGLE by EDR in May (light blue), corresponds to what has been published by Europeana in June (light blue). What EDR published in EAGLE in June (green), corresponds to what Europeana should have published in July (green), and so on. The central column contains the total amount of items provided to the EAGLE Aggregator, cumulative month after month, while in the columns under 'D-Net' are visible the figures divided into artefacts and visual representations. Under the last column 'Europeana' there are the figures as counted by Europeana through its data statistic tool. What is visible online in the Europeana portal are the Cultural Heritage Objects (CHO).

□ **Epigraphic Database Roma (EDR)**

Date	D-Net		Total	Europeana		
	artefact	visual		CHO	WebResources	Total
May	61,218	33,151	94,369			
June	61,697	34,569	96,266	61,218	5,094	66,132
July	64,320	39,283	103,603	no publication	no publication	no publication
August	64,888	39,508	104,396	no publication	no publication	no publication
Sept	64,888	39,508	104,396	no publication	no publication	no publication

The EDR content due for MS15 is 45.000 items. At September 2015, EDR sent to the EAGLE Aggregator 64,888 artefacts and 39,508 visual representation for a total of 104,396 items. Europeana published so far 61.218 artefacts and 33.151 visual representations. As it can be seen from the table, Europeana did not harvest and publish the data monthly ingested since June 2015.

□ **Epigraphic Database Bari (EDB)**

Date	D-Net		Total	Europeana		
	artefact	visual		CHO	WebResources	Total
May	32,082	4,522	36,604			
June	33,150	5,695	38,845	32,082	827	32,909

July	33,150	5,695	38,845	no publication	no publication	no publication
August	34,538	6,507	41,045	no publication	no publication	no publication
Sept	34,538	6,507	41,045	no publication	no publication	no publication

The EDB content due for MS15 is 30.000 items. At September 2015, EDB sent to the EAGLE Aggregator 34,538 artefacts and 6,507 visual representation for a total of 41,045 items. Europeana published so far 32,082 artefacts and 4.522 visual representations. As it can be seen from the table, Europeana did not harvest and publish the data monthly ingested since June 2015.

❑ **Epigraphic Database Heidelberg (EDH)**

Date	D-Net		Total	Europeana		
	artefact	visual				
May	67,998	15,547	83,545	CHO	WebResources	Total
June	67,998	15,547	83,545	67,994	7,159	75,153
July	69,057	16,068	85,125	no publication	no publication	no publication
August	69,057	16,068	85,125	no publication	no publication	no publication
Sept	69,057	16,068	85,125	no publication	no publication	no publication

The EDH content due for MS15 is 50.000 items. At September 2015, EDH sent to the EAGLE Aggregator 69,057 artefacts and 16,068 visual representation for a total of 85,125 items. Europeana published so far 67,994 artefacts and 15.547 visual representations. As it can be seen from the table, Europeana did not harvest and publish the data monthly ingested since June 2015.

❑ **Last statues of Antiquities (LSA)**

Date	D-Net		Total	Europeana
	artefact	visual		

May	2,836	4,291	7,127	CHO	WebResources	Total
June	2,836	4,288	7,124	2,836	2,998	5,834
July	2,836	4,288	7,124	no publication	no publication	no publication
August	2,836	4,288	7,124	no publication	no publication	no publication
Sept	2,836	4,288	7,124	no publication	no publication	no publication

The LSA content due for MS15 is 1.125 items. At September 2015, LSA sent to the EAGLE Aggregator 2,836 artefacts and 4,288 visual representation for a total of 7,124 items. Europeana published so far 2.836 artefacts and 4.291 visual representations. Since this partner provided already all the content declared in the DoW, the delays of Europeana did not affect its publication. The small decrease in visual representations is due to quality checks that the provider is carrying out.

❑ Hispania Epigraphica (HE)

Date	D-Net		Total	Europeana		
	artefact	visual		CHO	WebResources	Total
May	26,824	46,627	73,451	CHO	WebResources	Total
June	27,522	56,057	83,579	26,826	35,140	61,966
July	28,187	64,021	92,208	no publication	no publication	no publication
August	28,379	69,668	98,047	no publication	no publication	no publication
Sept	28,413	71,040	99,453	no publication	no publication	no publication

The HE content due for MS15 is 176.250 items. At September 2015, EH sent to the EAGLE Aggregator 28,413 artefacts and 71,040 visual representations for a total of 99,453 items. As previously explained, this Content Provider is still working to solve some issues and to increase the amount of data to be provided. Europeana published so far 26,824 artefacts and 46.627 visual representations. As it can be seen from the table, Europeana did not harvest and publish the data monthly ingested since June 2015.

❑ Ubi erat Lupa (PLUS)

Date	D-Net		Total	Europeana		
	artefact	visual				
May	24,681	39,605	64,286	CHO	WebResources	Total
June	24,681	40,324	65,005	24,681	20,001	44,682
July	24,931	40,733	65,664	no publication	no publication	no publication
August	24,970	40,733	65,703	no publication	no publication	no publication
Sept	24,970	40,733	65,703	no publication	no publication	no publication

The PLUS content due for MS15 is 38.250 items. At September 2015, PLUS sent to the EAGLE Aggregator 24,970 artefacts and 40,733 visual representations for a total of 65,703 items. Europeana published so far 24,681 artefacts and 39.605 visual representations. As it can be seen from the table, Europeana did not harvest and publish the data monthly ingested since June 2015.

❑ **Babes-Bolyai University (UBB)**

Date	D-Net		Total	Europeana		
	artefact	visual				
May	1,293	571	1,864	CHO	WebResources	Total
June	1,328	610	1,938	1,293	104	1,397
July	1,328	610	1,938	no publication	no publication	no publication
August	1,328	610	1,938	no publication	no publication	no publication
Sept	1,328	610	1,938	no publication	no publication	no publication

The UBB content due for MS15 is 3.000 items. At September 2015, UBB sent to the EAGLE Aggregator 1.328 artefacts and 610 visual representations for a total of 1.938 items. Europeana published so far 1.293 artefacts and 571 visual representations. As it can be seen from the table, Europeana did not harvest and publish the data monthly ingested since June 2015.

❑ **Roman inscriptions from Brigetio (ELTE)**

Date	D-Net		Total	Europeana		
	artefact	visual				
May	440	385	825	CHO	WebResources	Total
June	440	384	824	440	217	657
July	440	384	824	no publication	no publication	no publication
August	582	513	1,095	no publication	no publication	no publication
Sept	582	513	1,095	no publication	no publication	no publication

The ELTE content due for MS15 is 1.125 items. At September 2015, ELTE sent to EAGLE 582 artefacts and 513 visual representations for a total of 1.095 items. Europeana published so far 440 artefacts and 385 visual representations. As it can be seen from the table, Europeana did not harvest and publish the data monthly ingested since June 2015.

❑ **Latin inscriptions from Colonia Iulia Pola and Colonia Iulia Parentium (UNIPU)**

Date	D-Net		Total	Europeana		
	artefact	visual				
July	1,227	1,210	2,437	CHO	WebResources	Total
August	1,227	1,210	2,437	no publication	no publication	no publication
Sept	1,227	1,210	2,437	no publication	no publication	no publication

The UNIPU content due for MS15 is 1.500 items. At September 2015, UNIPU sent to EAGLE 1.227 artefacts and 1.210 visual representations for a total of 2.437 items. Europeana did not publish anything so far since the content was published in the EAGLE infrastructure in July for the first time.

❑ **Epigraphic Archives of Slovenia (ZRC-SAZU)**

Date	D-Net		Total	Europeana		
	artefact	visual				
July	0	0	0	CHO	WebResources	Total
August	0	0	0	no publication	no publication	no publication
Sept	0	0	0	no publication	no publication	no publication

The ZRC-SAZU content due for MS15 is 300 items. The content of this provider will pass through EDR and at the moment the last technical issues are being fixed in order to start uploading the data. For this reason, there are still no publications in the EAGLE infrastructure and in Europeana.

❑ **Petrae (AUSONIUS)**

Date	D-Net		Total	Europeana		
	artefact	visual				
May	1,332	1,350	2,682	CHO	WebResources	Total
June	1,560	1,572	3,132	1,332	286	1,618
July	1,560	1,572	3,132	no publication	no publication	no publication
August	1,560	1,572	3,132	no publication	no publication	no publication
Sept	1,608	1,637	3,245	no publication	no publication	no publication

The AUSONIUS content due for MS15 is 3.750 items. At September 2015, AUSONIUS sent to the EAGLE Aggregator 1.608 artefacts and 1.637 visual representations for a total of 3.245 items. Europeana published so far 1.332 artefacts and 1.350 visual representations. As it can be seen from the table, Europeana did not harvest and publish the data monthly ingested since June 2015.

❑ **Arachne (DAI)**

Date	D-Net		Total	Europeana		
	artefact	visual				
May	126,620	500,000	626,620	CHO	WebResources	Total
June	127,145	535,741	662,886	126,620	227,544	354,164
July	122,703	535,741	658,444	no publication	no publication	no publication
August	122,703	535,741	658,444	no publication	no publication	no publication
Sept	122,703	535,741	658,444	no publication	no publication	no publication

The DAI content due for MS15 is 750.000 items. At September 2015, DAI sent to the EAGLE Aggregator 122.703 artefacts and 535.741 visual representations for a total of 658.444 items. This Content Provider is a bit under the amount that was due for this Milestone because they experienced some issues in the mapping that delayed slightly the ingestion. Europeana published so far 126.620 artefacts and 500.000 visual representations. As it can be seen from the table, Europeana did not harvest and publish the data monthly ingested since June 2015.

❑ **Archaia Kipriaki Grammateia Digital Corpus (CYI)**

Date	D-Net		Total	Europeana		
	artefact	visual				
August	0	0	0	CHO	WebResources	Total
Sept	0	0	0	no publication	no publication	no publication

The CYI content due for MS15 is 331 items. This provider experienced some technical issues in mapping the content due to the peculiarity of its metadata schema. At the moment the XSLT is under elaboration and the partner is investigating together with WP4 leaders appropriate solutions. For this reason, there are still no publications in the EAGLE infrastructure and in Europeana.

❑ **Inscriptions of Roman Tripolitania (BSR)**

Date	D-Net	Total	Europeana
------	-------	-------	-----------

	artefact	visual				
May	1,022	1,389	2,411	CHO	WebResources	Total
June	1,022	1,389	2,411	1,022	513	1,022
July	1,022	1,389	2,411	no publication	no publication	no publication
August	1,025	1,403	2,428	no publication	no publication	no publication
Sept	1,025	1,403	2,428	no publication	no publication	no publication

The BSR content due for MS15 is 1.017 items. At September 2015, BSR sent to the EAGLE Aggregator 1.025 artefacts and 1.403 visual representations for a total of 2.428 items. Europeana published so far 1.022 artefacts and 1.389 visual representations. As it can be seen from the table, Europeana did not harvest and publish the data monthly ingested since June 2015.

The following tables refer to the new Content Providers who joined the EAGLE network, providing content both to EAGLE and to Europeana.

❑ **Inscriptions of Aphrodisias (KCL)**

Date	D-Net		Total	Europeana		
	artefact	visual				
July	1,505	3,017	4,522	CHO	WebResources	Total
August	1,505	3,017	4,522	no publication	no publication	no publication
Sept	1,505	3,017	4,522	no publication	no publication	no publication

At September 2015, KLC sent to the EAGLE Aggregator 1.505 artefacts and 3.017 visual representations for a total of 4.522 items. Europeana did not publish anything so far since the content was published in the EAGLE infrastructure in July for the first time.

❑ **Roman inscriptions of Britain (RIB)**

Date	D-Net		Total	Europeana		
	artefact	visual				
July	2,401	0	2,401	CHO	WebResources	Total
August	2,401	0	2,401	no publication	no publication	no publication
Sept	2,401	0	2,401	no publication	no publication	no publication

At September 2015, RIB sent to the EAGLE Aggregator 2.401 artefacts and 0 visual representations for a total of 2.401 items. Europeana did not publish anything so far since the content was published in the EAGLE infrastructure in July for the first time.

❑ Monumenta Asia Minoris Antiqua (MAMA)

Date	D-Net		Total	Europeana		
	artefact	visual				
July	386	819	1,205	CHO	WebResources	Total
August	386	819	1,205	no publication	no publication	no publication
Sept	386	819	1,205	no publication	no publication	no publication

At September 2015, MAMA sent to the EAGLE Aggregator 386 artefacts and 819 visual representations for a total of 1.205 items. Europeana did not publish anything so far since the content was published in the EAGLE infrastructure in July for the first time.

❑ The Israel Museum, Jerusalem (IMJ)

Date	D-Net		Total	Europeana		
	artefact	visual				
Sept	18	18	36	CHO	WebResources	Total
				no publication	no publication	no publication

At September 2015, IMJ sent to the EAGLE Aggregator 18 artefacts and 18 visual representations for a total of 36 items. Europeana did not publish anything so far since the content was published in the EAGLE infrastructure in September for the first time.

❑ **Vindolanda Tablets Online (VTO)**

Date	D-Net		Total	Europeana		
	artefact	visual				
Sept	737	0	737	CHO	WebResources	Total
				no publication	no publication	no publication

At September 2015, VTO sent to the EAGLE Aggregator 737 artefacts and 0 visual representations for a total of 737 items. Europeana did not publish anything so far since the content was published in the EAGLE infrastructure in September for the first time.

6. CONCLUSIONS

This Deliverable is the result of the collaborative work done by WP2, WP3, WP4 and the Content Providers for the implementation of the data ingestion workflow and it gives information about the status of the EAGLE contribution to Europeana for the period April – September 2015.

During the present reporting period, all the Content Providers worked to reach the target of 75% of the total contribution, which corresponds to the project's milestone MS15.

1.081.334 items (72% of the total contribution) are presently available in the EAGLE OAI-PMH server, partly already harvested and published in the Europeana portal, partly still to be harvested by Europeana. A few Content Providers are still facing some difficulties in reaching the planned target, but the majority is on track and there are some who already exceeded their total planned contribution. 5 new Content Providers contributed to this Milestone.

It has to be noted that Europeana is experiencing various technical problems. Due to this fact, WP3 was informed that during the period June – August 2015 the harvesting would have been interrupted. In the meantime, the EAGLE Content Providers continued to work and to publish their content regularly on the EAGLE Aggregator and OAI-PMH server. However, the issues on Europeana's side are causing delays in the harvesting and publication of the EAGLE content as well as in getting the feedback which is necessary to fix possible problems in the data.

WP3 keeps monitoring the content ingestion closely. The periodic report about the contributions to Europeana is being updated every 6 months. The next (and final) issue is planned at the end of the project, in March 2016, in conjunction with Milestone 16.